



## SPT/UC SERIES

### Sandwich/Salad Prep Units, Undercounter Refrigerators And Freezers

#### SANDWICH/SALAD PREP UNITS

- SPT-28       SPT-48       SPT-72

#### UNDERCOUNTER REFRIGERATORS

- UC-28SR       UC-48DR       UC-72TR

#### UNDERCOUNTER FREEZERS

- UC-28SF       UC-48DF

## FEATURES

### CONSTRUCTION

- Design meets NSF 7 criteria
- Stainless steel exterior
- Bright white ABS interior on all models except SPT-72 and UC-72TR. These models have stainless steel interior.
- 1<sup>3</sup>/<sub>4</sub>" foamed-in-place "low ODP" urethane insulated walls and doors
- Standard recessed door handles
- Adjustable, heavy-duty wire shelves
- Four 5" diameter casters (2 locking, 2 non-locking)
- Stainless steel louver distributes air to all areas of the unit

- Louver is food acid and stain resistant
- Door width:
  - SPT-28, UC-28SR, UC-28SF .....27<sup>3</sup>/<sub>8</sub>"
  - SPT-48, SPT-72, UC-48DR, UC-72TR, UC-48DF .....23<sup>7</sup>/<sub>8</sub>"

### REFRIGERATION

- Refrigerant:
  - SPT models, UC-R models and UC-28SF ..... R-134a
  - UC-48DF ..... R-404A
- Forced-air refrigeration system
- Two fans for optimum cooling efficiency

- Self-contained, no plumbing required
- Temperature range:
  - SPT and UC-R models ..... 33° to 41°F (1° to 5°C)
  - UC-F models ..... -11° to -3°F (-24° to -19°C)
- R-factor (insulation efficiency rating): 14.58

### WARRANTY

- Standard limited four year extended compressor and one year limited parts and labor

## OPTIONS

- Legs
- Back splash guard for UC models
- 2" casters for UC models (reduces height to 33<sup>1</sup>/<sub>2</sub>")



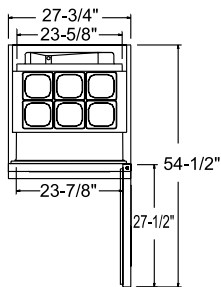
# SPT/UC SERIES

## SANDWICH/SALAD PREP UNITS, UNDERCOUNTER REFRIGERATORS AND FREEZERS

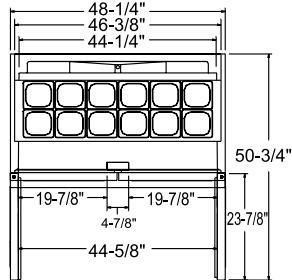
### TECHNICAL SPECIFICATIONS

| MODEL                             | DIMENSIONS (in.)               |    |    | DIMENSIONS (mm) |     |      | VOLTS | AMPS | UNIT H.P. | NO. OF SHELVES | NO. OF 1/6 SIZE PANS** | CAP. CU. FT. | SHIP CU. FT. | SHIP WT. LB/KG |
|-----------------------------------|--------------------------------|----|----|-----------------|-----|------|-------|------|-----------|----------------|------------------------|--------------|--------------|----------------|
|                                   | L                              | D  | H* | L               | D   | H*   |       |      |           |                |                        |              |              |                |
| <b>SANDWICH/SALAD UNITS</b>       |                                |    |    |                 |     |      |       |      |           |                |                        |              |              |                |
| SPT-28                            | 27 <sup>3</sup> / <sub>4</sub> | 30 | 43 | 705             | 762 | 1092 | 115   | 5.5  | 1/4       | 2              | 6                      | 6.5          | 29.0         | 198/90         |
| SPT-48                            | 48 <sup>1</sup> / <sub>4</sub> | 30 | 43 | 1226            | 762 | 1092 | 115   | 5.0  | 1/3       | 4              | 12                     | 12.0         | 48.4         | 264/120        |
| SPT-72                            | 72 <sup>3</sup> / <sub>4</sub> | 30 | 43 | 1848            | 762 | 1092 | 115   | 10.8 | 5/8       | 6              | 18                     | 19.0         | 67.7         | 385/175        |
| <b>UNDERCOUNTER REFRIGERATORS</b> |                                |    |    |                 |     |      |       |      |           |                |                        |              |              |                |
| UC-28SR                           | 27 <sup>3</sup> / <sub>4</sub> | 30 | 36 | 705             | 762 | 914  | 115   | 4.0  | 1/5       | 2              | N/A                    | 6.5          | 24.8         | 178/81         |
| UC-48DR                           | 48 <sup>1</sup> / <sub>4</sub> | 30 | 36 | 1226            | 762 | 914  | 115   | 4.0  | 1/5       | 4              | N/A                    | 12.0         | 40.5         | 244/111        |
| UC-72TR                           | 72 <sup>3</sup> / <sub>4</sub> | 30 | 36 | 1848            | 762 | 914  | 115   | 7.0  | 1/3       | 6              | N/A                    | 19.0         | 58.6         | 340/155        |
| <b>UNDERCOUNTER FREEZERS</b>      |                                |    |    |                 |     |      |       |      |           |                |                        |              |              |                |
| UC-28SF                           | 27 <sup>3</sup> / <sub>4</sub> | 30 | 36 | 705             | 762 | 914  | 115   | 7.5  | 1/3       | 2              | N/A                    | 6.5          | 24.8         | 190/86         |
| UC-48DF                           | 48 <sup>1</sup> / <sub>4</sub> | 30 | 36 | 1226            | 762 | 914  | 115   | 11.5 | 3/5       | 4              | N/A                    | 12.0         | 40.5         | 260/118        |

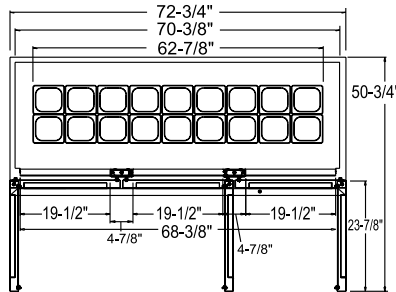
\*Height includes casters. \*\*Pans are 4" deep, 1.5L capacity.



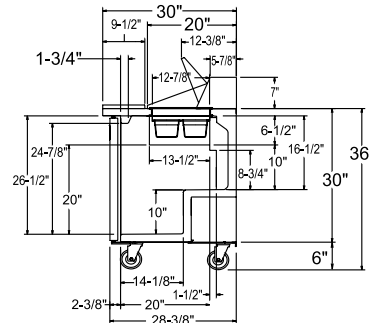
**SPT-28**



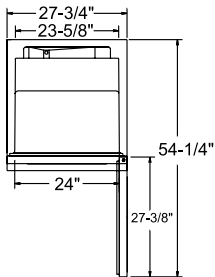
**SPT-48**



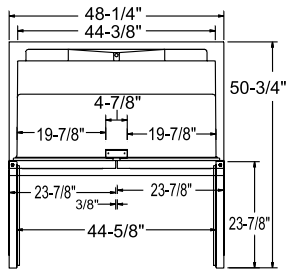
**SPT-72**



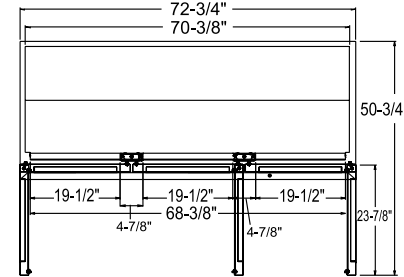
**SIDE**



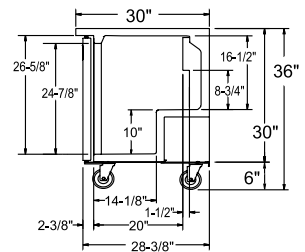
**UC-28SR/SF**



**UC-48DR/DF**

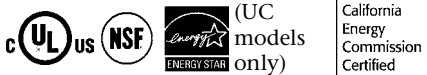


**UC-72TR**



**SIDE**

### LISTINGS



### HOOKUP

Via plug in, 10 foot long, flexible 3 wire 16/3 cord with molded plug.



### BID SPECIFICATIONS

Item no. SPT-\_\_\_\_\_ and/or UC-\_\_\_\_\_  
Provide \_\_\_\_\_ ( ) Sandwich/Salad Preparation Units and/or Undercounter Refrigerators or Freezers, Master-Bilt model no. SPT-\_\_\_\_\_ and/or UC-\_\_\_\_\_.

Model design will meet NSF 7 criteria. Exterior finish will be stainless steel. Units will have bright white ABS interior except for SPT-

72 and UC-72TR which will be stainless steel. Standard features include adjustable, heavy-duty wire shelves and 5" diameter casters. All doors to have standard recessed handles.

SPT models, UC-R models and UC-28SF will contain R-134a refrigerant. UC-48DF will contain R-404A. The temperature range for SPT and UC-R models will be 33° to 41°F (1° to

5°C). The range for UC-F models will be -11° to -3°F (-24° to -19°C). All models to have a standard limited 4 year extended compressor and one year limited parts and labor warranty. Cabinets to be UL, C-UL and NSF listed and California Energy Commission certified. UC models to be Energy Star certified.

**NOTE:** Cabinet designed for optimum performance in air-conditioned area at 75°F ambient and 55% relative humidity. All specifications subject to change without notice.



908 Highway 15 North • New Albany, MS 38652  
PHONE: 800-647-1284 or 662-534-9061 • FAX: 800-232-3966 or 662-534-6049 • www.master-bilt.com

